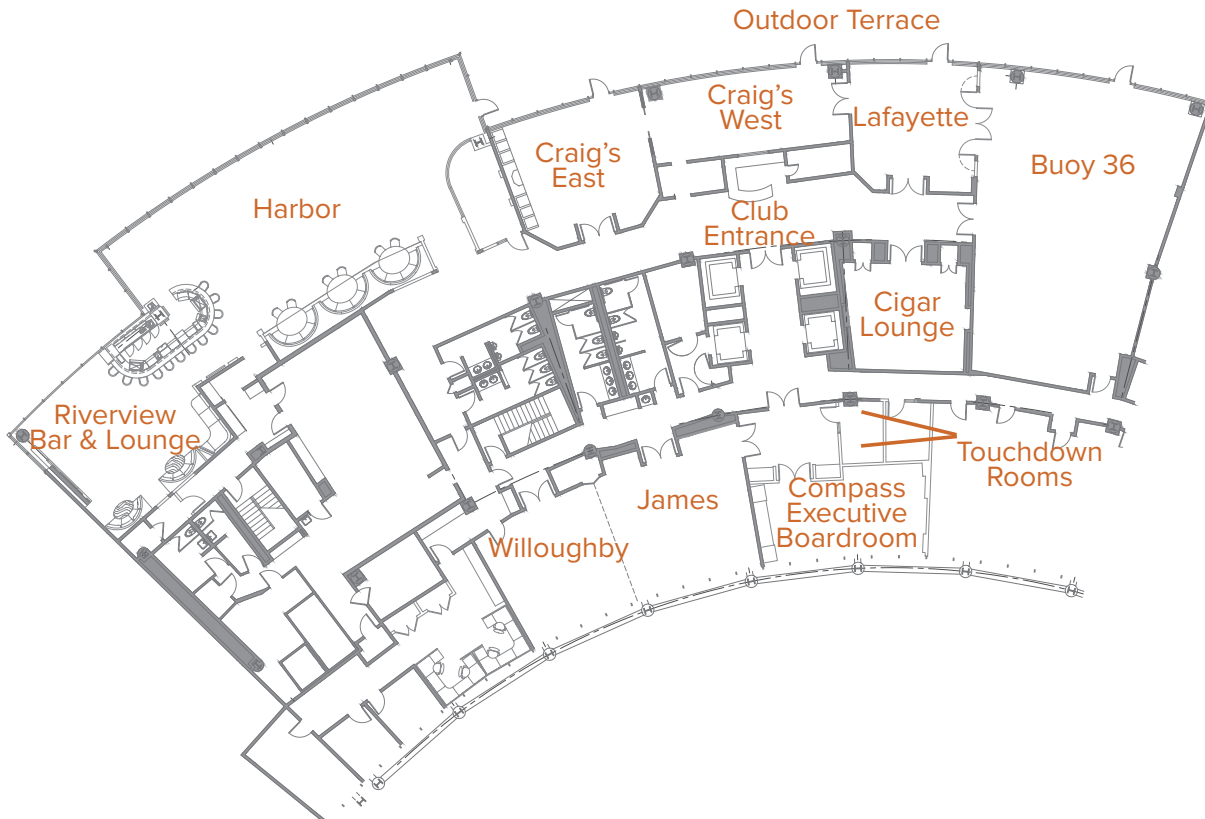




FLOOR PLAN & CAPACITIES



Room	Banquet rounds	Reception style	Conference style
Buoy 36	140	175	N/A
Lafayette Room	40	50	24
Buoy 36 and Lafayette Rooms	180	225	N/A
James Room	40	50	26
Willoughby Room	40	50	26
James and Willoughby Rooms	80	100	35
Craig's on the River East	40	N/A	18
Craig's on the River West	30	40	24
Compass Executive Boardroom	N/A	N/A	16
Elizabeth River Room	N/A	N/A	10

Contact your Private Event Director today!

757.625.6606

town-point.com



*Some restrictions and exclusions may apply. Contact Club for details. © ClubCorp USA, Inc. All rights reserved. 26141 1114 LA



EVENT ROOMS

Buoy 36 and Lafayette Rooms

The Buoy 36 and Lafayette Rooms combined provide our largest banquet space. With floor-to-ceiling windows and direct access to our spacious outdoor terrace, this area provides all elements to create a memorable event.

Buoy 36 Room

The Buoy 36 Room, covering over 2,000 square feet, may also be booked alone for a large event. It's ideal for client dinners, military dining events, school banquets, seminars, employee appreciation events and much more.

Lafayette Room

The Lafayette Room alone provides an elegant setting for smaller and more intimate events. It is a great space for rehearsal dinners, executive lunches, engagement celebrations, client appreciation events and bridal/baby showers, just to name a few.

Craig's on the River West

Also known as "Craig's West", this popular space has panoramic windows and direct access to the outdoor terrace. With adjoining doors to the Lafayette Room, these two spaces may be booked together for a medium-sized reception-style event or to provide a separate area for cocktail hour before being seated in Lafayette Room.

James and Willoughby Rooms

Placed on the city side of the Club, the James and Willoughby Rooms provide the perfect setting for a wedding ceremony, medium-sized reception or all-day seminar. The windows overlooking the lobby of the World Trade Center provide just the right touch of natural light for an elegant atmosphere.

Compass Executive Boardroom

This space is great for an executive board meeting or an elevated dining experience. Complete with a mounted 70" plasma TV, HDMI hookup for laptop projection, video-conferencing capabilities and outlets along the entire length of the boardroom table, it is set to satisfy all of your audio/visual needs.

Elizabeth River Room

Located directly next to the Harbor Room and lunch buffet, the Elizabeth River Room is great for a quick off-site meeting with a few coworkers or a small private space for friends and family to gather and have a bite to eat.

Contact your Private Event Director today!

757.625.6606

town-point.com

